

255-275_W



MANAGEMENT SYSTEM

ISO 9001: Quality management system
ISO 14001: Standard for environmental management system
OHSAS 18001: International standard for occupational health and safety assessment system

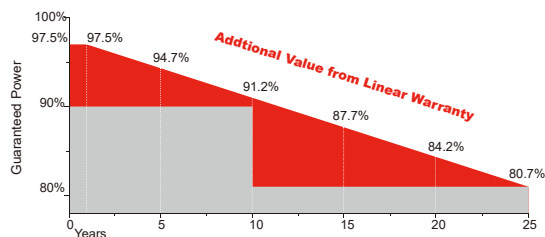
PRODUCT CERTIFICATES



INSURANCE



WARRANTY



10 YEARS Guarantee on product material and workmanship
25 YEARS linear power output warranty

Safety



Safety for salt mist corrosion (IEC61701, tested in TÜV SÜD)



Safety for ammonia corrosion (IEC62716, tested in TÜV SÜD)



Safety for fire risk (Class C, tested in TÜV SÜD and Rheinland)

Reliability



PID free products, passing TÜV SÜD system voltage durability test



World 1st company to pass "Thresher Test" and "On-site Power Measurement Validation" certificate



Bankable products

Performance



Outstanding power output capability at low irradiance



Triple 100% Electroluminescence (EL) tests minimize breakage rate



Top rank in Photon yield measurement

SRP-6PB SERIES 6 INCH 60 CELLS



DuraFlex™

*DURAFLEX™ PRODUCTS ARE AVAILABLE UPON REQUEST
*BLACK FRAME / BLACK BACK-SHEET PRODUCTS ARE AVAILABLE UPON REQUEST.

Electrical Characteristics (STC)

Module Type	SRP-255-6PB	SRP-260-6PB	SRP-265-6PB	SRP-270-6PB	SRP-275-6PB
Maximum Power at STC -P _{mp} (W)	255	260	265	270	275
Open Circuit Voltage -V _{oc} (V)	38.10	38.20	38.30	38.40	38.50
Short Circuit Current -I _{sc} (A)	8.60	8.67	8.73	8.82	8.88
Maximum Power Voltage -V _{mp} (V)	31.90	32.10	32.40	32.70	33.00
Maximum Power Current -I _{mp} (A)	8.00	8.10	8.18	8.28	8.34
Module Efficiency STC-η _m (%)	15.67	15.98	16.29	16.59	16.90

STC: Irradiance 1000 W/m² module temperature 25°C AM=1.5
Power measurement tolerance: +/-3%

Electrical Characteristics (NOCT)

Module Type	SRP-255-6PB	SRP-260-6PB	SRP-265-6PB	SRP-270-6PB	SRP-275-6PB
Maximum Power at STC -P _{mp} (W)	188	192	195	199	203
Open Circuit Voltage -V _{oc} (V)	35.24	35.34	35.42	35.52	35.61
Short Circuit Current -I _{sc} (A)	6.88	6.93	6.98	7.06	7.10
Maximum Power Voltage -V _{mp} (V)	29.67	29.85	30.12	30.41	30.69
Maximum Power Current -I _{mp} (A)	6.34	6.43	6.47	6.54	6.61

NOCT: Irradiance 800 W/m² ambient temperature 20°C wind speed :1m/s
Power measurement tolerance: +/-3%

Power Tolerance (W)	(0,+4.99)
Maximum System Voltage (V)	1000 (TÜV), 1000 (UL)
Maximum Series Fuse Rating (A)	15

Temperature Characteristics

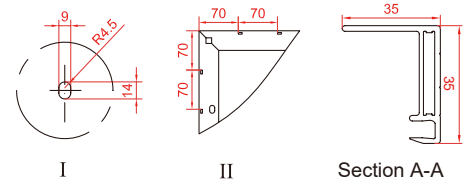
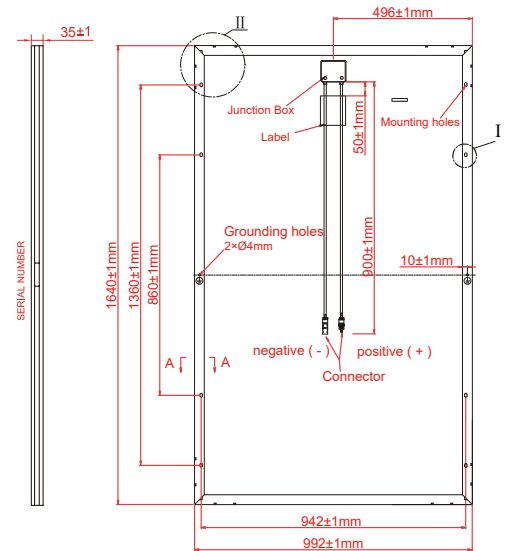
Pmax Temperature Coefficient	-0.42 %/°C
Voc Temperature Coefficient	-0.32 %/°C
Isc Temperature Coefficient	+0.04 %/°C
Operating Temperature	-40~+85 °C
Nominal Operating Cell Temperature (NOCT)	45±2 °C

Packing Configuration

Container	20'GP	40'GP
Pieces per Pallet	30	30
Pallets per Container	12	28
Pieces per Container	360	840

Mechanical Specifications

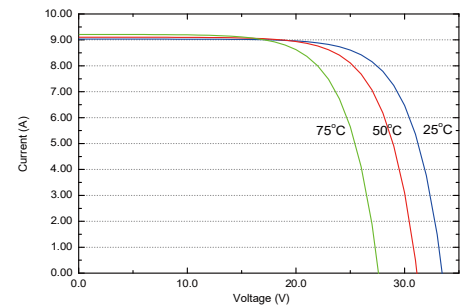
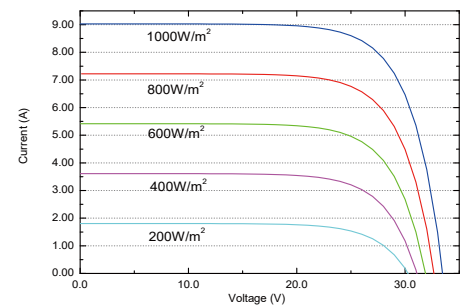
External Dimensions	1640 x 992 x 35 mm
Weight	19.0 kg
Solar Cells	Poly crystalline 156 x 156 mm (60pcs)
Front Glass	3.2 mm tempered glass, low iron
Frame	Anodized aluminium alloy
Junction Box	IP65/IP67
Output Cables	4.0 mm ² , cable length:900 mm
Connector	MC4 Compatible
Mechanical Load	5400 Pa



* All Dimensions in mm

* The above drawing is a graphical representation of the product.
For engineering quality drawings please contact SERAPHIM.

I-V&P-V Curve (SRP-260-6PB)



NEW

From Solax



SINGLE PHASE INVERTERS

From Solax

www.solaxpower.com

X1 BOOST Dual MPPT

The X1 Boost series are high quality dual MPPT inverter offering efficiency and reliability at an unbeatable cost.

Solax have developed a range of single phase inverters, unrivaled in the industry for their quality, reliability and efficiency. The Solax single phase inverters boast a wide MPPT voltage range to allow for more energy harvesting and have a maximum input voltage of 600V, with a maximum efficiency of 97.8%.



X1-3.0-T X1-3.3-T
X1-3.6-T X1-4.2-T
X1-4.6-T X1-5.0-T

Get in touch now:

Global: +86 571-56260008

Aus: +61 1300 476529

Website: www.solaxpower.com

DE: +49 7231 4180999

UK: +44 845 6896009

Email: info@solaxpower.com



X1 BOOST FROM SOLAX

SINGLE-PHASE INVERTERS-PRODUCT DATA



X1-3.0-T X1-3.3-T X1-3.6-T X1-4.2-T X1-4.6-T X1-5.0-T

INPUT (DC)						
Max.recommended DC power [W]	3250	3500	4000	4600	5200	5200
Max.DC voltage [V]	600					
Norminal DC operating voltage [V]	360					
Max. input current [A]	12/12	12/12	12/12	12/12	12/12	12/12
Max. short circuit current [A]	15/15	15/15	15/15	15/15	15/15	15/15
MPPT voltage range [V]	125-580	125-580	125-580	125-580	125-580	125-580
MPPT voltage range (full load) [V]	150-550	150-550	160-550	190-550	220-550	220-550
Start input voltage [V]	100	100	100	100	100	110
Start output voltage [V]	150	150	150	150	150	150
Shut down input voltage [V]	70	70	70	70	70	70
No. of MPP trackers	2	2	2	2	2	2
Strings per MPP tracker	1	1	1	1	1	1
OUTPUT (AC)						
Norminal AC power [VA]	3000	3300	3680	4200	4600	4999
Max. apparent AC power [VA]	3000	3300	3680	4200	4600	4999
Rated grid voltage(AC voltage range) [V]	220/230/240(180 to 280)					
Rated grid Frequency(AC frequency range) [Hz]	50(45 to 55)/60(55 to 65)					
Max. output current [A]	14	15	16	19	21	21
Displacement power factor	0.8 overexcited to 0.8 underexcited					
Total harmonic distortion(THD)	<2%					
EFFICIENCY						
MPPT efficiency	99.90%	99.90%	99.90%	99.90%	99.90%	99.90%
Euro-efficiency	97.00%	97.00%	97.00%	97.00%	97.00%	97.00%
Max. efficiency	97.80%	97.80%	97.80%	97.80%	97.80%	97.80%
POWER CONSUMPTION						
Input standby power[W]	<2W					
STANDARD						
Safety	IEC62109-1/-2/AS3100					
EMC	EN61000-1/EN61000-2/EN61000-3					
Cetification	G83/2;G59;AS4777.2-2015;VDE4105; EN50438;CQC;VDE0126					
ENVIRONMENT LIMIT						
Protection class	IP65					
Operating temperature range [°C]	-20..... +60 (derating at +45)					
Humidity [°C]	0-95 (non-condensing)					
Altitude [m]	<2000					
Storage temperature [°C]	-20..... +60					
Noise emission(typical) [dB]	<25					
Mounting	Wall hanging					
OTHERS						
Dimensions(WxHxD) [mm]	339x420x143					
Weight [kg]	14.6	14.6	14.6	16.7	16.7	16.7
Cooling concept	Natural					
Topology	Transformerless					
Communication	WIFI(optional), RF(optional), Meter(optional), RS485, USB, DRM					
LCD display	7 LCD					
Button	4(CapSense Button)					
Standard warranty	Standard 5 years					

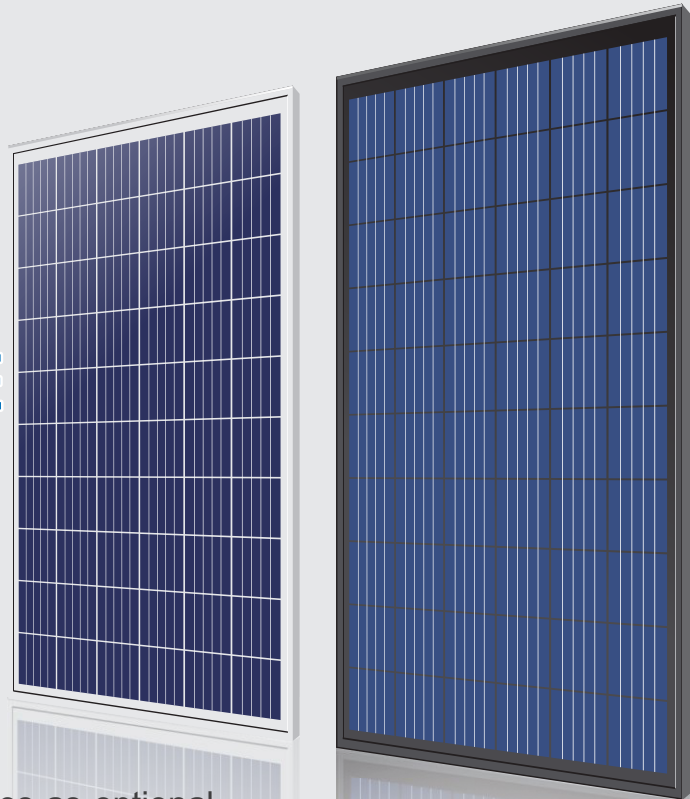


Premium Series

SUNTELLITE MODULE POLYCRYSTALLINE

ZDNY-260P60	260Wp
ZDNY-265P60	265Wp
ZDNY-270P60	270Wp
ZDNY-275P60	275Wp

ZDNY-***P60 All black series as optional



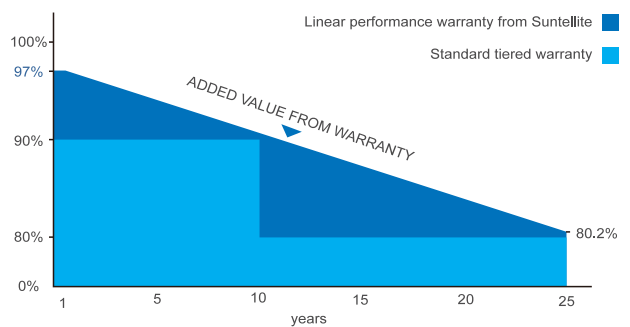
Key Features

- High-yield modules with high level of efficiency :
Automatic cell and module production with 100% quality control and product trace-ability.
0 to +3% of positive power tolerance guaranteed
PID Free(Potential Induced Degradation)
- Heavy Load mechanical resistance :
TUV Certified (5400Pa tested against snow and 2400Pa against the wind)
- The production system is ISO9001, ISO14001, OHSAS18001 certified
- Fire Test Approved :
Application class A, Safety Class II, Fire Rating A
- High Salt mist and ammonia resistance
- Enhanced design for easy installation and long-term reliability.



Warranty

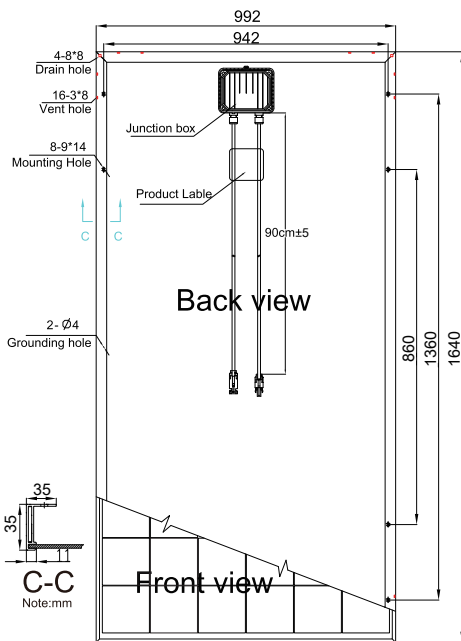
- 12 years limited workmanship warranty.
- No less than 97% output power in the first year.
- No more than 0.7% annual declination since the second year.
- 25 year warranty at 80.2% power output.
- Product liability and E&O insurance has been covered by Chubb Insurance



Typical electrical characteristics

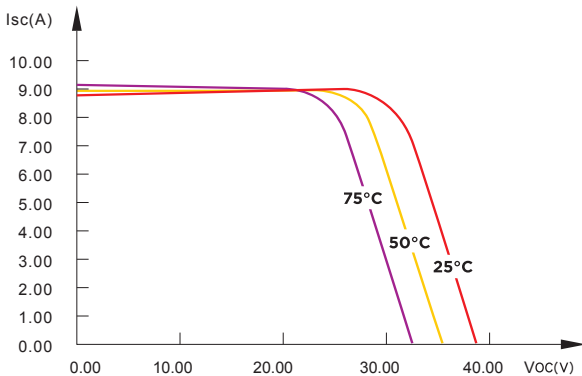
Characteristics	ZDNY-260P60	ZDNY-265P60	ZDNY-270P60	ZDNY-275P60
Max.Power(Pmax)	260Wp	265Wp	270Wp	275Wp
Optimum Operating Voltage(Vm)	31.91V	32.52V	32.87V	33.46V
Optimum Operating Current(Im)	8.15A	8.15A	8.22A	8.22A
Open-circuit Voltage(Voc)	39.10V	39.64V	39.92V	40.20V
Short-circuit Current(Isc)	8.56A	8.56A	8.62A	8.66A
Cell Efficiency	17.80%	18.20%	18.50%	18.83%
Module efficiency	15.98%	16.29%	16.60%	16.90%

- STC (Standard Test Condition): Irradiance 1000W/m², Module Temperature 25°C, AM=1.5
- NOCT: Irradiance 800W/m², ambient Temperature 20°C, wind speed 1m/s



Solar Cell	Poly-crystalline 156*156mm
Output Tolerance(Pmax)	0 ~ +3%
Number of cells	60 cells in series
Module Dimension	1640*992*35mm
Weight	18.80kg
Max.System Voltage	1000V(TUV)/1000V(UL)
Max.Series Fuse Rating	15A
Output Cable	PV 4mm ²
Cable Length	90cm±5
Number of bypass diodes	3
Temperature cycling range	(-40 ~ 85 °C)
NOCT	47°C ±2°C
Temperature coefficients of Isc	+0.046%/K
Temperature coefficients of Voc	-0.303%/K
Temperature coefficients of Pmax	-0.41%/K
Load Capacity	394pcs/20'GP
	896pcs/40'HQ

I-V Curves of PV module ZDNY-270P60 at various cell temperatures



I-V Curves of PV module ZDNY-270P60 at various solar irradiance

